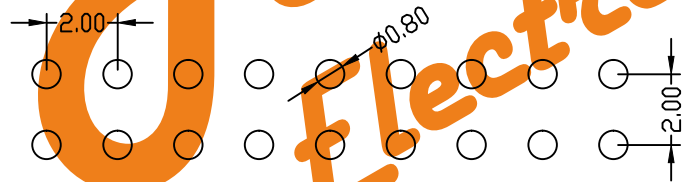
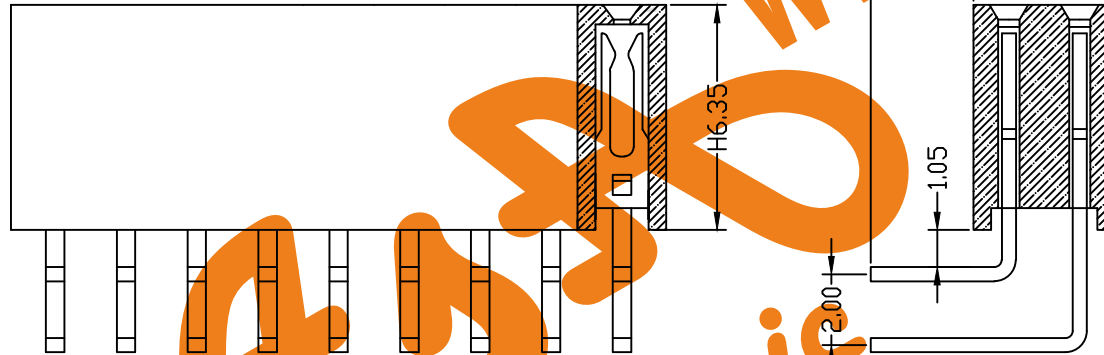
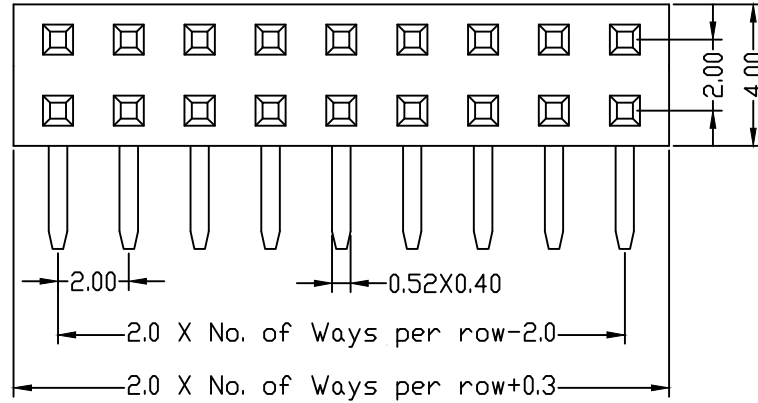


ROHS COMPLIANT

2.00mm Female Header Dual Row Angle Type H=6.35



PCB LAYOUT

SPECIFICATION

Current Rating: 1.5Amp
 Insulation Resistance: 5000M ohms min
 Contact Resistance: 20M ohms max
 Dielectric Withstanding: AC500V
 Operating Temperature: -65°C to +125°C
 Contact Material: Brass
 Insulator Material: PBT,UL 94V-0 Black

Ordering Code:

FHDR05 - X - X - D - X - X - X
 ① ② ③ ④ ⑤ ⑥ ⑦

- ① Series No:
- ② No. of Contacts
02 To 80
- ③ Contact Plating
G0: Gold flash
G1: 3u" Gold
G2: 5u" Gold
G3: 10u" Gold
G4: 15u" Gold
G5: 30u" Gold
SN: Tin
- ④ Connector Type
D: Dual
- ⑤ Plastic High:
H: 6.35
Please mark the desired length in the H
- ⑥ Insulator Material
A: PBT
B: PA6T
C: LCP
D: PA46
- ⑦ Packing
A: Tray
T: Tube
U: Tube+CAP
R: Tape&Reel
W: Tape&Reel+CAP

Unless Otherwise specified tolerance

X: ±0.35
 X.X: ±0.25
 X.XX: ±0.20
 X.XXX: ±0.15

SCALE:
As Shown

UNIT:
mm

ASA WWW.ASA-Elec.com
Electronic
ASA Electronic Co.
 Tel : (+98) 21 66 73 56 82 Mob : (+98) 912 03 161 02

DRAWN: junfon H

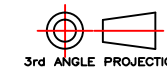
TITLE:

CHECKED: YANG

2.00mm Female Header Dual Row Angle Type

DRAWING NO: FHDR05-XXDXXX

PRODUCT NO: FHDR05-XXDXXX



REV	DESCRIPTION	DATE
	Add option of plating	10/8/1
